

Formentor 2026



Access in accordance with the provisions set out in the [Resolution of January 14th of 2026](#), from the DGT, which establishes special traffic regulation measures for 2026.

Contents

| | |
|---|---|
| Section 1: Access to Formentor Beach | 2 |
| Section 2: Access to Formentor Lighthouse | 4 |
| Practical Information | 5 |
| Maps of interest | 6 |



MINISTERIO
DEL INTERIOR



Subdirección General
de Gestión de la
Movilidad y Tecnología

Section 1: Access to Formentor Beach

The measures apply from May 15th to October 18th¹, both dates included, between 10:00 AM and 10:00 PM.







Access to the parking lot located at PK 8+000 with a private vehicle is allowed without prior authorization, until full capacity is reached (Green traffic light + Automatic Road Barrier Raised + Sign on the Variable Message Panel).

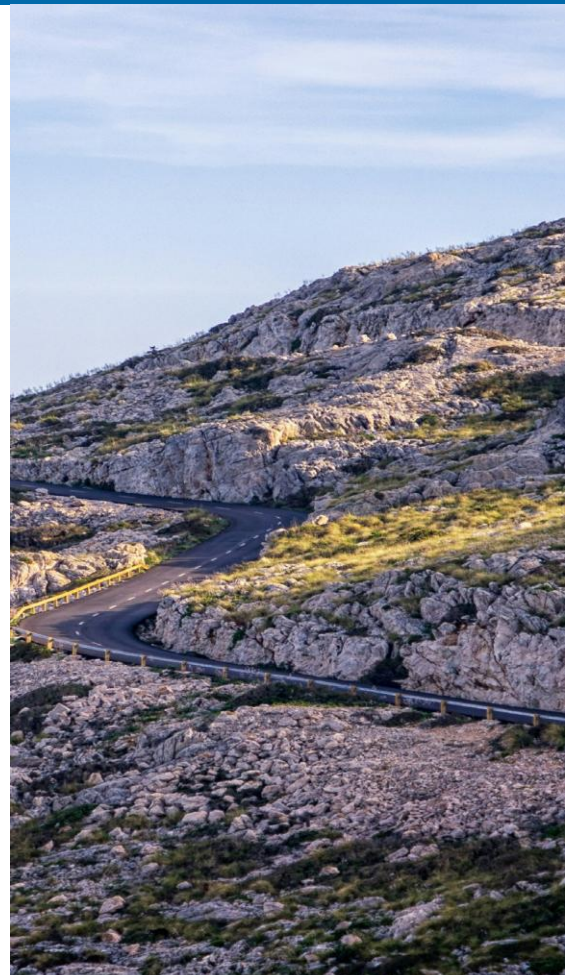


If full capacity is reached, access will be closed and restricted to authorized vehicles only. At PK 2+000 on the **Ma-2210 (Pollença)**, there is an **automatic road barrier** that only allows access to **authorized** vehicles.

Residents, PRM vehicles, and other potentially authorized parties must contact the DGT at least three working days in advance via email at formentor@dgt.es.

Only the following are eligible for authorization:

-  Shuttle bus operated by the Balearic Government (TIB).
-  Residents property owners within the restricted section.
-  Bicycles.
-  Public service vehicles, rescue, medical, civil protection, emergency and law enforcement vehicles (official).
-  Private buses, taxis, and ride-hailing services (VTC).
-  PRM vehicles entitled to use the V-15 parking permit.

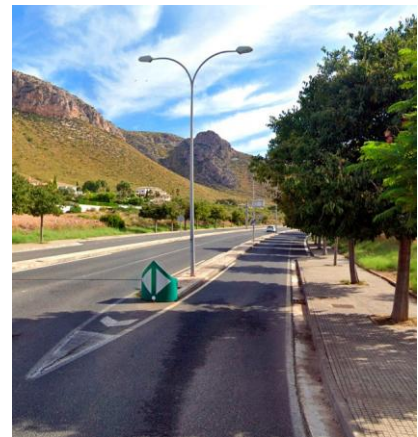


¹ Due to the eclipse on August 12th, restrictions may be subject to change. Further details will be provided.

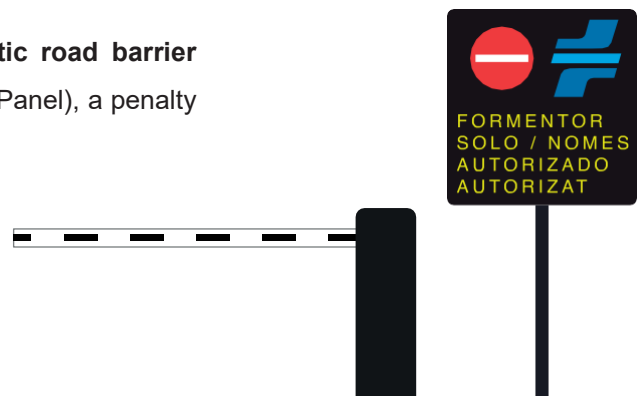
The automatic road barrier will lift upon recognizing the license plate of an authorized vehicle. If plate recognition fails, authorized users can scan a **QR code** at the reader located next to the intercom to open the barrier.

It is therefore recommended to carry the QR code either printed or available on your mobile phone.

Anyone without authorization must wait in the service road until a parking space becomes available.



When the parking is full (**Red traffic light, automatic road barrier down, and “No Entry” sign on the Variable Message Panel**), a penalty will be issued for accessing a **restricted area**.



Section 2: Access to Formentor Lighthouse

The measures apply from May 15th to October 18th², both dates included, between 10:00 AM and 10:00 PM. Access is only permitted to **authorized vehicles**. An automatic road barrier controlling access is located at **PK 8+700** on the Ma-2210.

Residents, PRM vehicles, and other potentially authorized users must contact the DGT at least three working days in advance via email at formentor@dgt.es.

Only the following are eligible for authorization:



Shuttle bus operated by the Balearic Government (TIB).



Residents property owners within the restricted section (up to PK 14+000 on the Ma-2210).



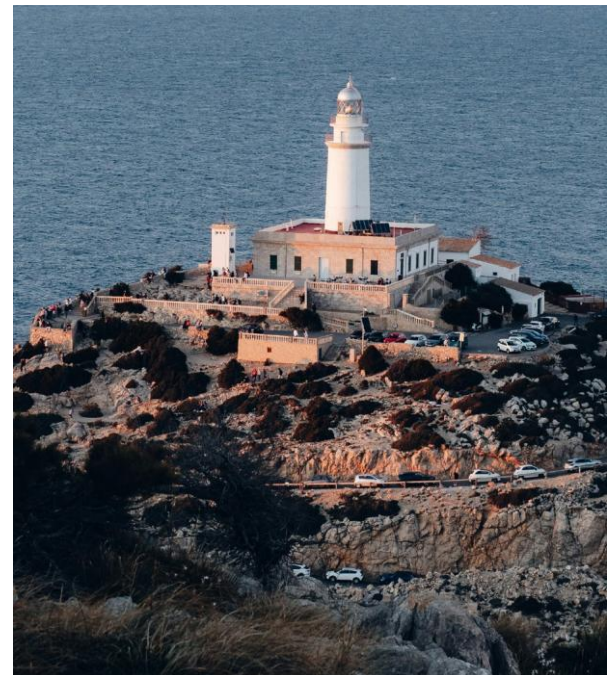
Bicycles.



Public service vehicles, rescue, medical, civil protection, emergency and law enforcement vehicles (official).



PRM vehicles entitled to use the V-15 parking permit.



The automatic road barrier will lift upon recognizing the license plate of an authorized vehicle. If plate recognition fails, authorized users can scan a **QR code** at the reader located next to the intercom to open the barrier.

It is recommended to carry the QR code either printed or accessible on your mobile phone.

Penalties will apply to any vehicle accessing the area without proper authorization. To avoid fines, vehicles entering before 10:00 AM must be at least at PK 8+600 by 09:58 AM. Additionally, it is prohibited to park or stop anywhere along the road that is not marked as a designated parking area with white lines. A penalty may be issued even if only one wheel is on the asphalt.

² Due to the eclipse on August 12th, restrictions may be subject to change. Further details will be provided.

Practical Information

Information on how to **access** the Formentor peninsula using the **shuttle bus** operated by the Balearic Government (TIB) can be found at the following link or by scanning/clicking the QR code:

<https://www.tib.org/web/ctm/autobus/linia/334>



Bus Line 334:

Alcúdia – Port de Pollença – Formentor Lighthouse

On the Formentor peninsula, the bus makes stops at: Mirador des Colomer, Formentor Beach, Cala Figuera–Cala Murta, and Formentor Lighthouse.

Along the **Ma-2200 road**, there are **three bus stops** in the direction of the Formentor peninsula: Port de Pollença (42051) – Bóquer (42057) – Can Singala (42055).

Line 334 connects with other TIB bus lines at the Port de Pollença stop and at the historic center of Alcúdia, making it possible to travel entirely by public transport from other parts of Mallorca without needing to drive.

If arriving by car to **Port de Pollença**, **free parking** is available the service road of the Ma-2200.



Maps of interest

